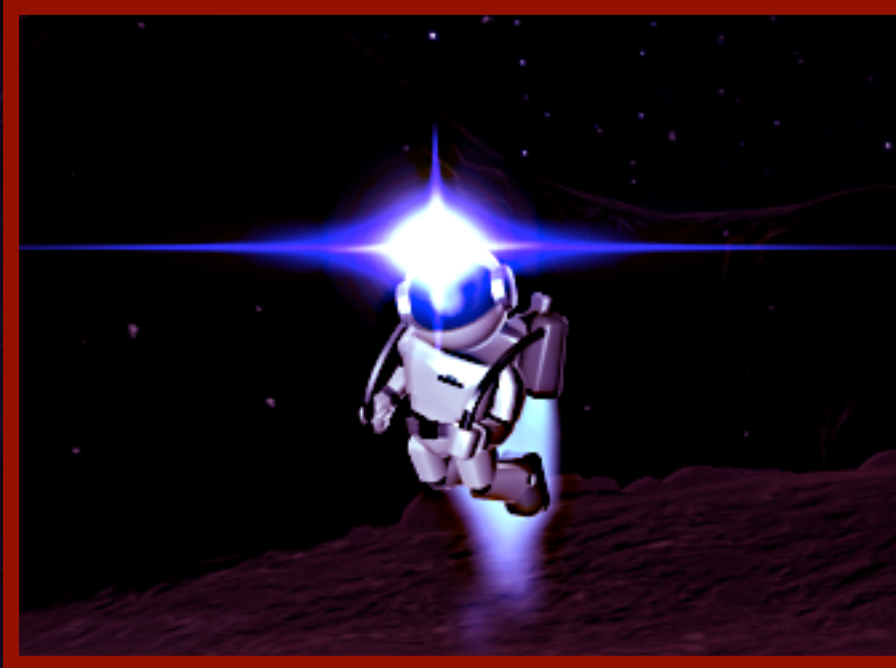
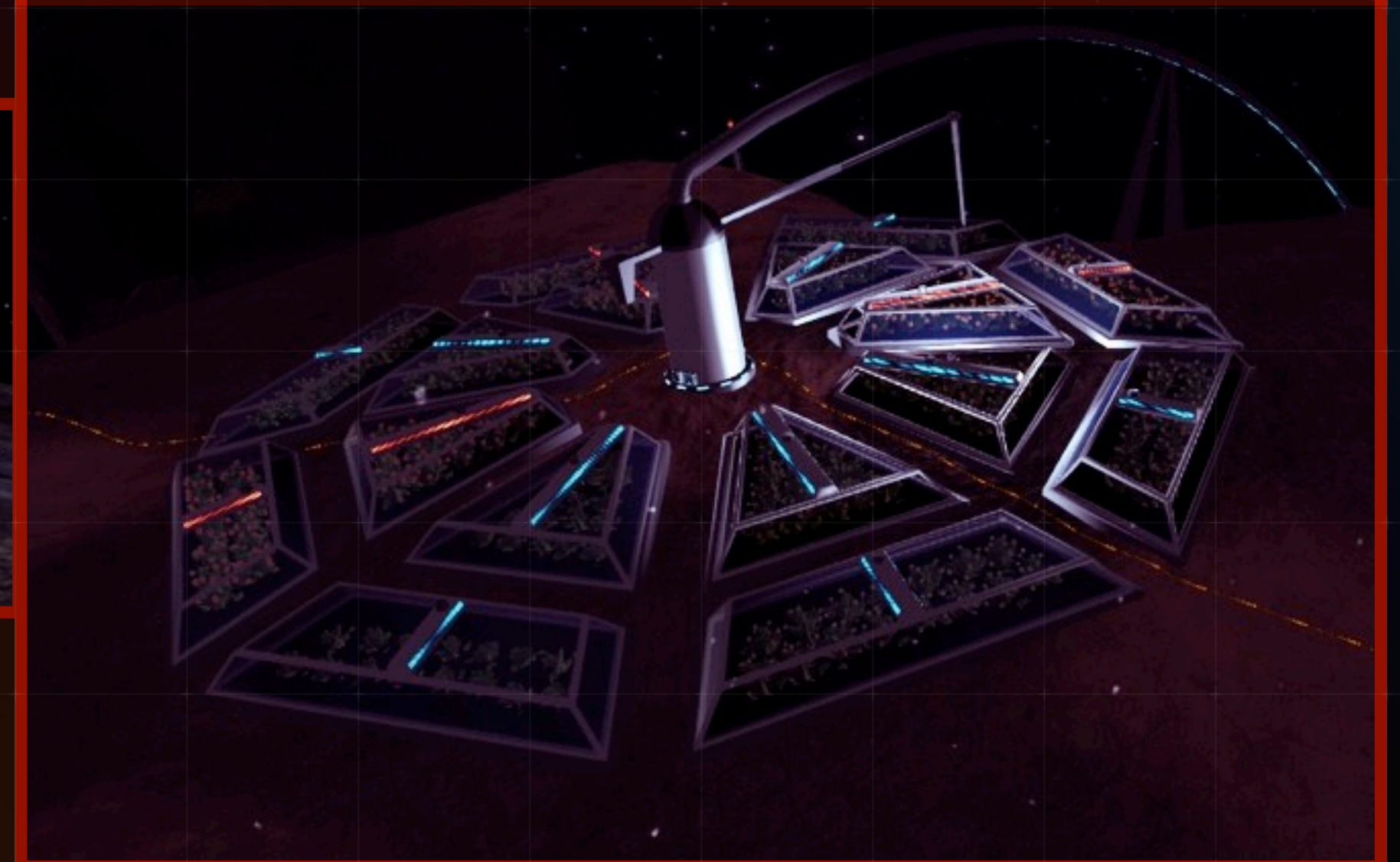
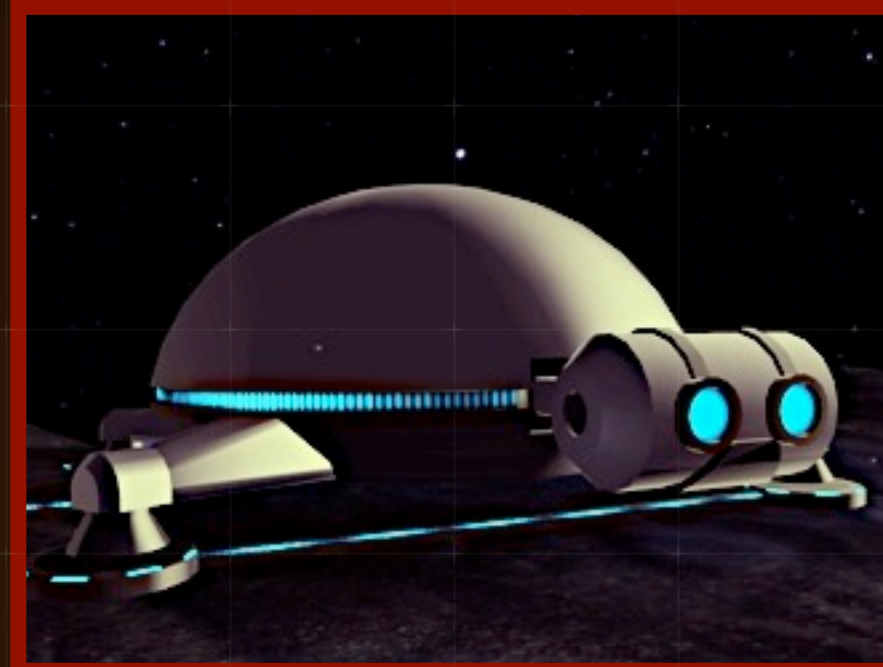


NEW HOPE STATION



'Gold Mine at the Edge of the Universe'



Introduction

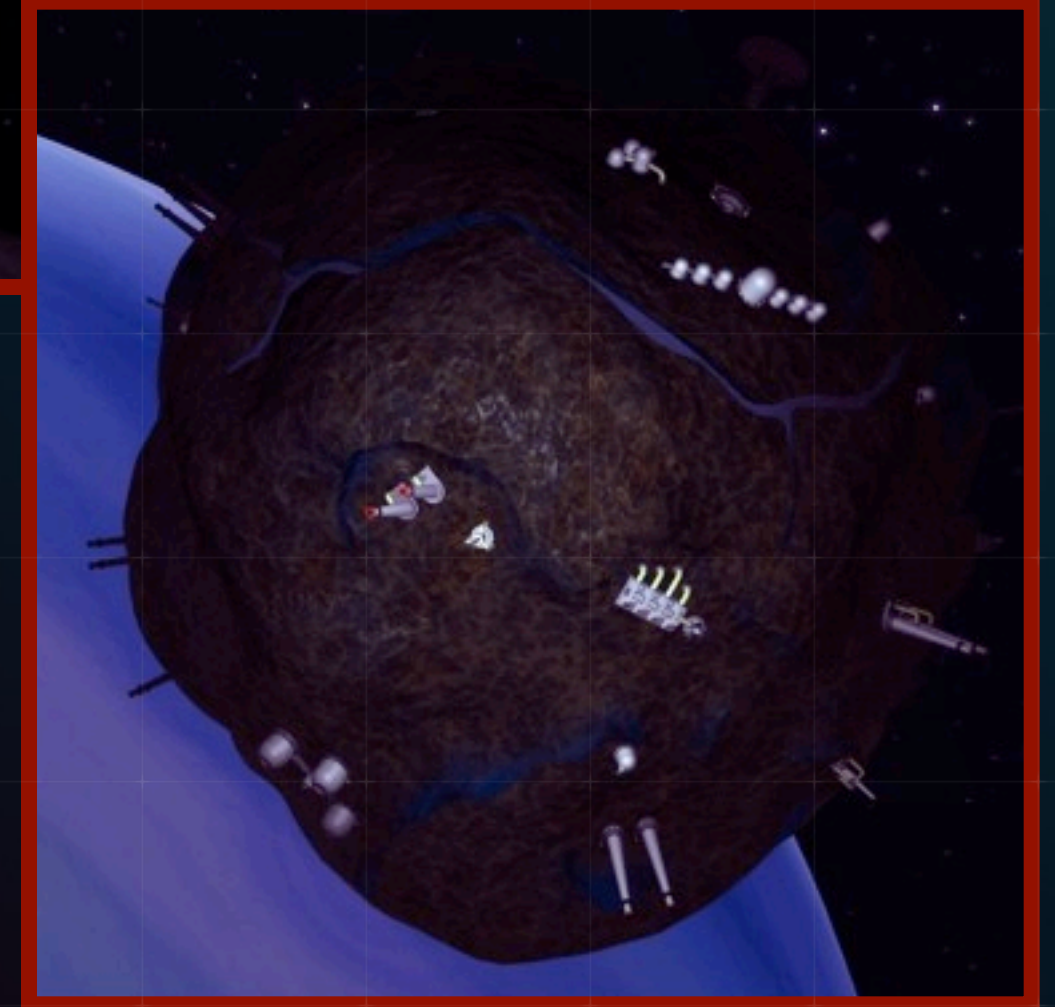
IHI welcomes you to **New Hope Station**, our very latest state-of-the art mining outpost spread across the seven micro-moons of magnificent Ice Giant Fortes-Q Prime!

This booklet will give you an overview of the products, facilities, working practices and planetary conditions surrounding this amazing new outpost. We hope you will see that now, just as for the past thirty years, Intergalactic Heavy Industries is proudly

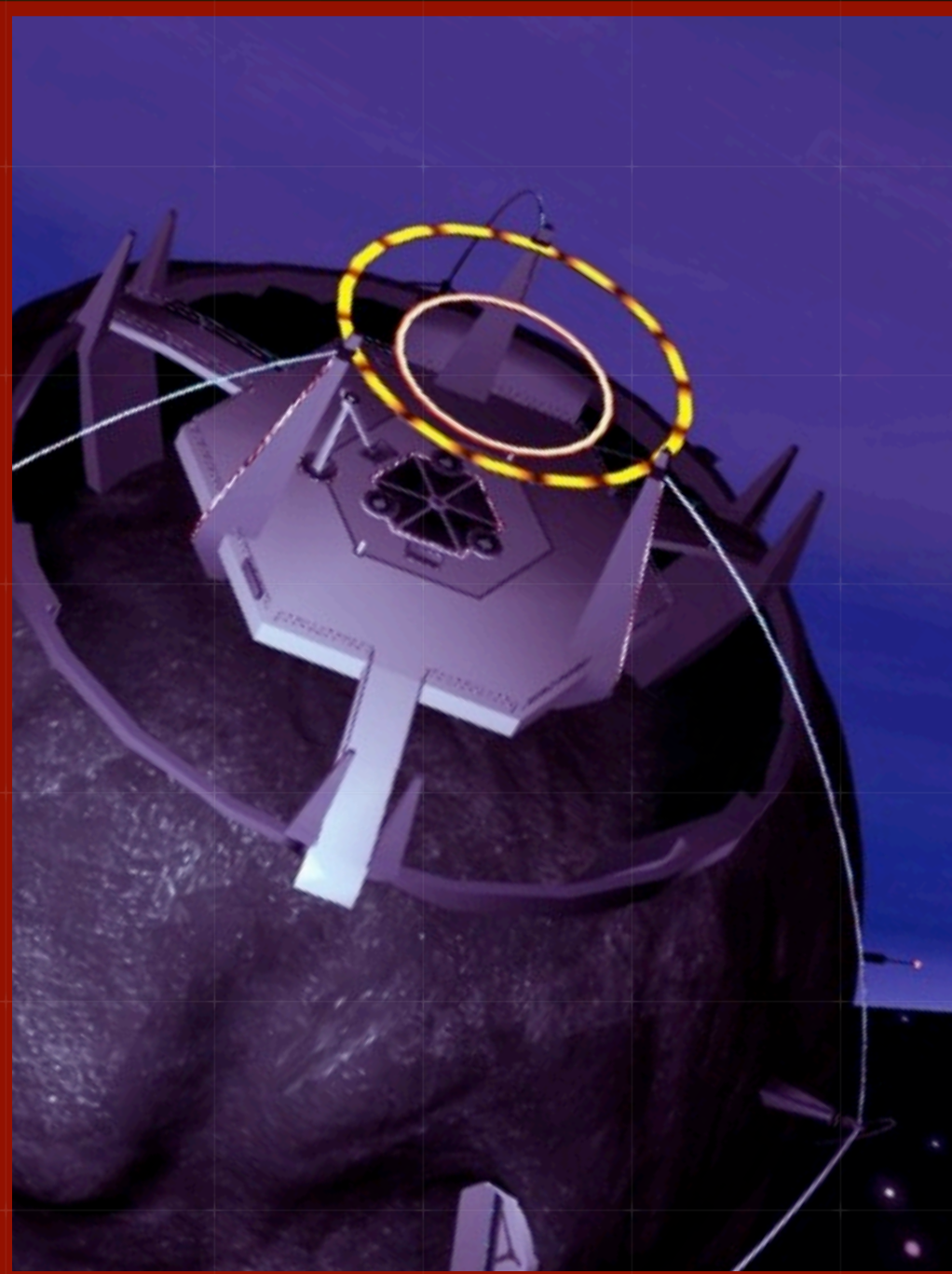
'Fracking the Universe, One Planet at a Time'.



Base supervisor Mr Zee Reynolds



Refinery and Factory facilities on Mollari



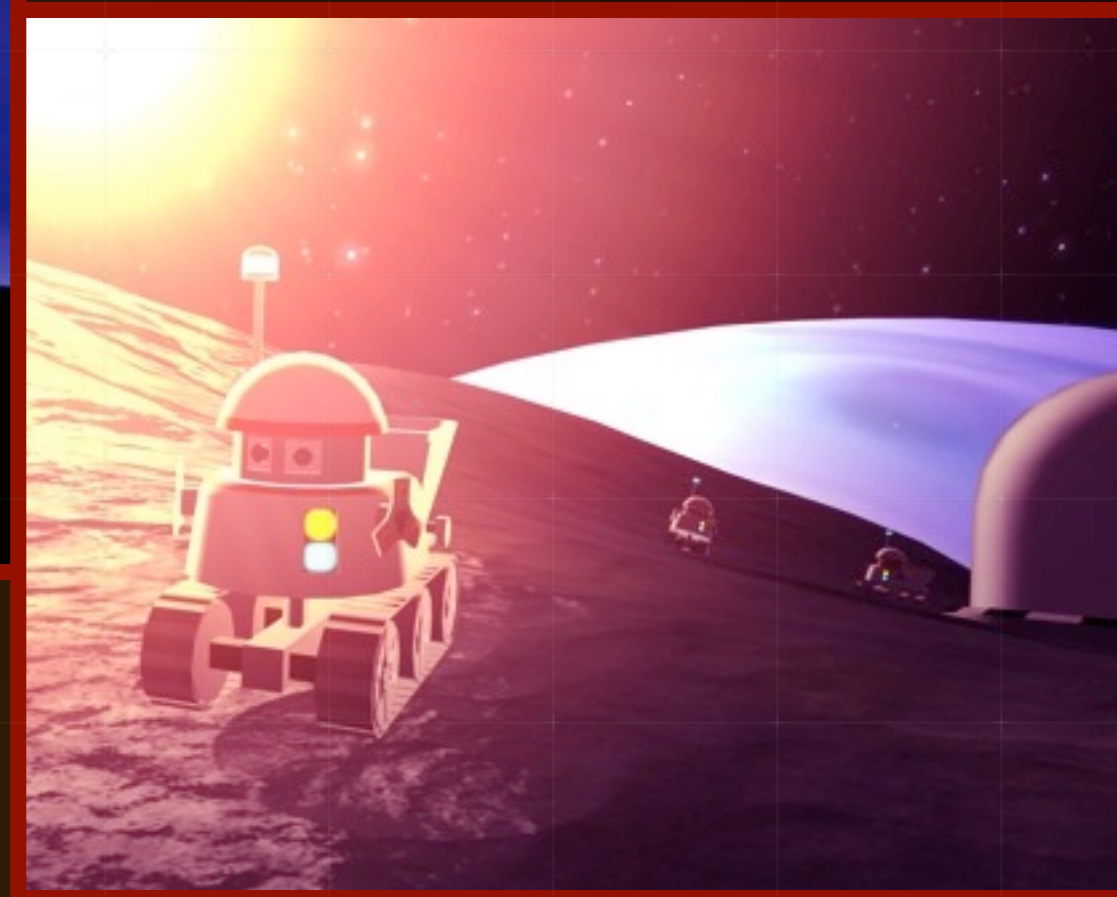
New Hope's 'Warp Gate' on Ackbar

Overview of the Fortes-Q System

Our tour begins with a quick overview of the Fortes-Q planetary system...

First fully surveyed fifteen years ago by deep space probe Cartman-6, the Fortes-Q system is currently the most remote chartered star system known to man. Company interests are centred upon Fortes-Q Prime, a vast planet similar in composition to our very own Neptune (although around twice as large).

Unusually for a planetary body of such magnitude, Fortes-Q has no conventional moons, but instead possesses seven 'micro-moons'. So small that they remained undetected until Cartman-6 reached the local system, they quickly earned the system its affectionate nick-name: 'Snow White and the Seven Dwarves'. Now better known as **Kryten, McCoy, Chiana, Ackbar, Mollari, Tam** and **Muffit**, each of these moons was found to be rich in **regenerating ores, minerals** and **rare crystals** which prompted an unanimous decision by IHI's board to acquire full mining rights to the system.



Worker drones gathering fuel ore on Chiana

New Hope Station

New Hope Station has been established over the course of the last five years and comprises facilities and equipment spread across all seven moons.

We enjoy the use of a direct **inter-space link** (a.k.a. 'worm-hole') to New Hope Station allowing non perishable inventory to travel across the universe in a matter of minutes. Since the stresses of such travel on a human are severe indeed, the vast majority of facility functions are highly automated.

A single company operative - **Mr Zee Reynolds** - is responsible for overseeing and maintaining facility operations. Zee completed his four year journey to Fortes-Q Prime six months ago and is now working tirelessly to raise the outpost's efficiency - measured using our **Basic Unified Relative Performance** or 'BURP' rating - to the highest level within the organization.

Our Fortes-Q Prime venture enjoys a most illustrious business partner in the form of soup industry heavy-weight **Spoony Corp.** Legendary Founder, Head Chef, and CEO Hank Spooky recently announced our partnership to the Spooky board saying 'we are proud to be opening our newest cannery as part of mankind's most distant outpost. I sleep easy knowing that day to day running of our showcase facility will be handled by our esteemed partner IHI whose workforce discretion we know to be second to none.'

The Moons of Fortes-Q Prime

We will present a short overview of company interests on each of the seven moons...

KRYTEN (Moon Alpha)

Orbital Distance	10023 km
Diameter / Area	190 m / 113411 m ²
Temp. Range	-325 to -120 °C

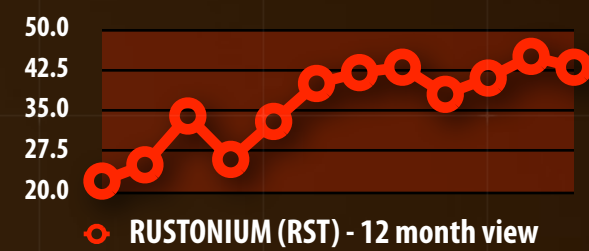
Being closest to Fortes-Q Prime, Kryten is little more than a frozen rock. Nevertheless, it has a vital role to play in our venture: chunks of ice from this moon are harvested and transported (via local space teleporter) to help cool refining equipment on Mollari or to support agriculture on Muffit.

McCOY (Moon Beta)

Orbital Distance	21120 km
Diameter / Area	280 m / 246300 m ²
Temp. Range	-260 to -45 °C

Rich with precious metal **Rustonium**, McCoy has become one of our two major mining outposts.

Pockets of **Turdite** crystal and other rare gems have also been located on this moon.

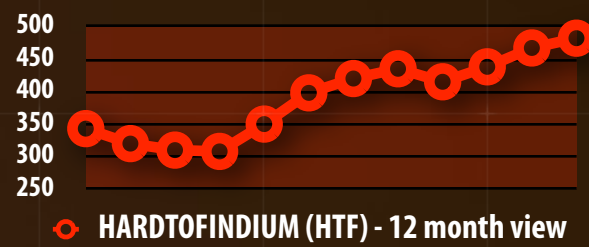


CHIANA (Moon Gamma)

Orbital Distance	25221 km
Diameter / Area	320 m / 321699 m ²
Temp. Range	-220 to -25 °C

Our second mining outpost, Chiana - while tiny - is one of the richest sources of fuel ore **Hardtofindium** in the known universe.

A single nugget of Hardtofindium can power a starship for several months; thanks to Chiana's unique environmental conditions we're sitting upon an apparently infinite source of fuel - as fast as we can mine them, new ore deposits regenerate!



ACKBAR (Moon Delta)

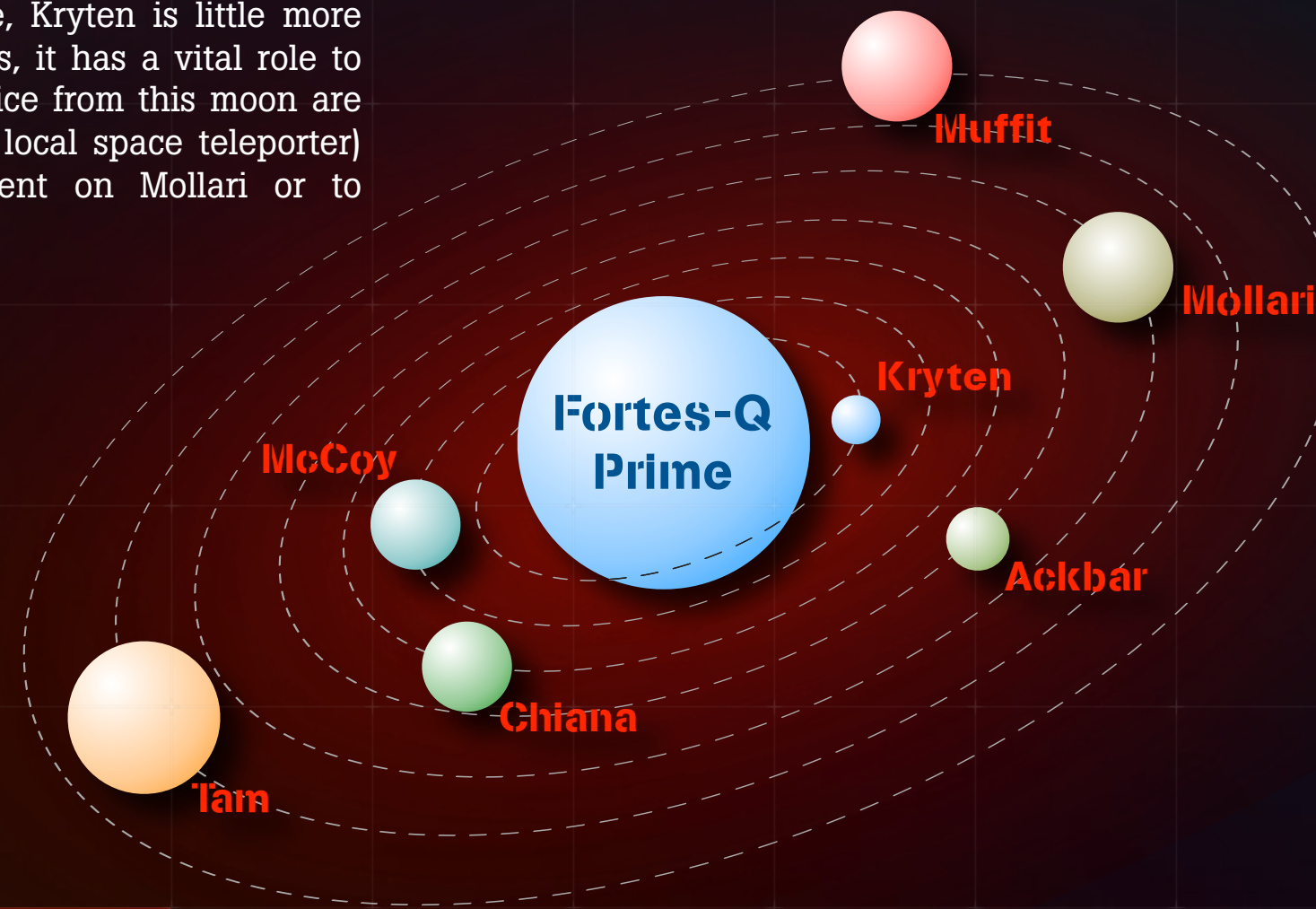
Orbital Distance	293327 km
Diameter / Area	240 m / 180955 m ²
Temp. Range	-170 to 20 °C

This is IHI's main base of operations and home to the critical Warp Gate that provides the outpost's link with New Earth. Automated warehousing facilities allow resources to be collected ready for mass shipment. Our operative's Home Pod is installed safely below the moon's surface here.

MUFFIT (Moon Eta)

Orbital Distance	421872 km
Diameter / Area	380 m / 608212 m ²
Temp. Range	-60 to 80 °C

Furthest from Fortes-Q Prime (and thus closest to the system's sun), Muffit's apparently barren surface is actually covered with a surprisingly rich form of lunar 'soil'. With the addition of water from Kryten and our use of state-of-the-art greenhouse facilities, we are able to grow a variety of crops that can no longer be harvested on New Earth.



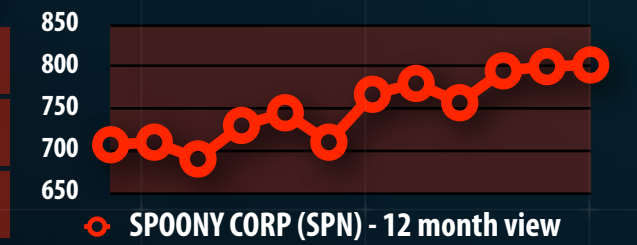
FORTES-Q PRIME

Distance from New Earth	421872 km
Diameter / Area	69272 km / 1.507 x 10 ¹⁰ km ²
Nearest Sun	Parzeval 7
Atmospheric Composition	Hydrogen (74.6%), Helium (22.9%)

MOLLARI (Moon Epsilon)

This is the operational centre of our refinery and factory facilities and location of Spoony Corp's newest cannery. Raw assets teleported from other moons can be processed into more valuable refined products before being shipped back to Earth and - best of all - our remote location puts us beyond the touch of virtually all expensive to enforce NERD (New Earth Regulatory Division) environmental policies!

Orbital Distance	324563 km
Diameter / Area	360 m / 407150 m ²
Temp. Range	-110 to 40 °C



TAM (Moon Zeta)

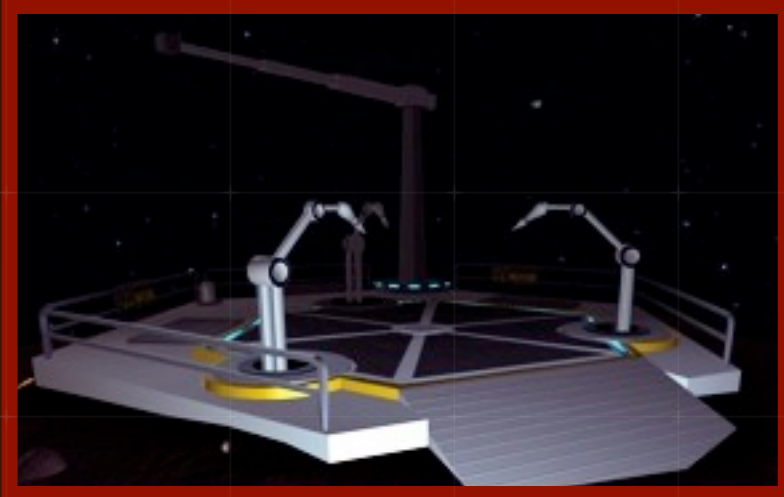
A highly volatile volcanic moon, this is the most hazardous of our facilities, but one whose risks are warranted by its unlimited source of **Blastamite Di-Exetate** (a.k.a. 'Boom Rocks') - a raw material core to munitions manufacture. As of the third quarter IHI officially became the largest supplier of Refined Boom Rock to New Earth's military.

Orbital Distance	366215 km
Diameter / Area	480 m / 916088 m ²
Temp. Range	120 to 400 °C

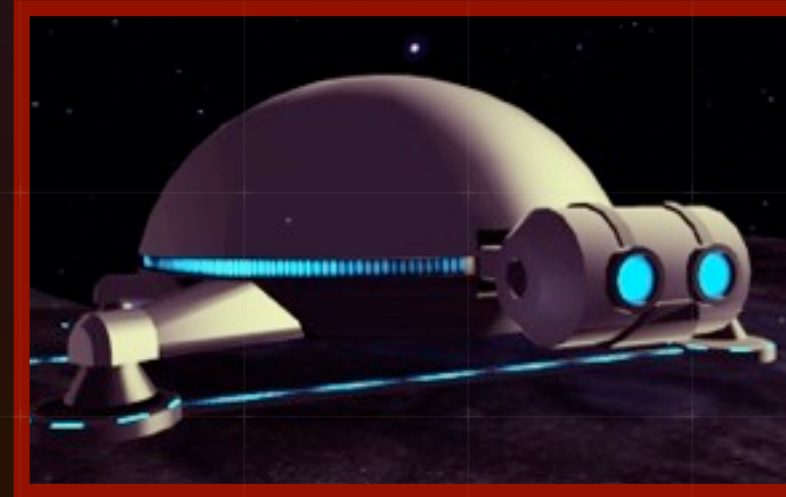


Notable Facilities

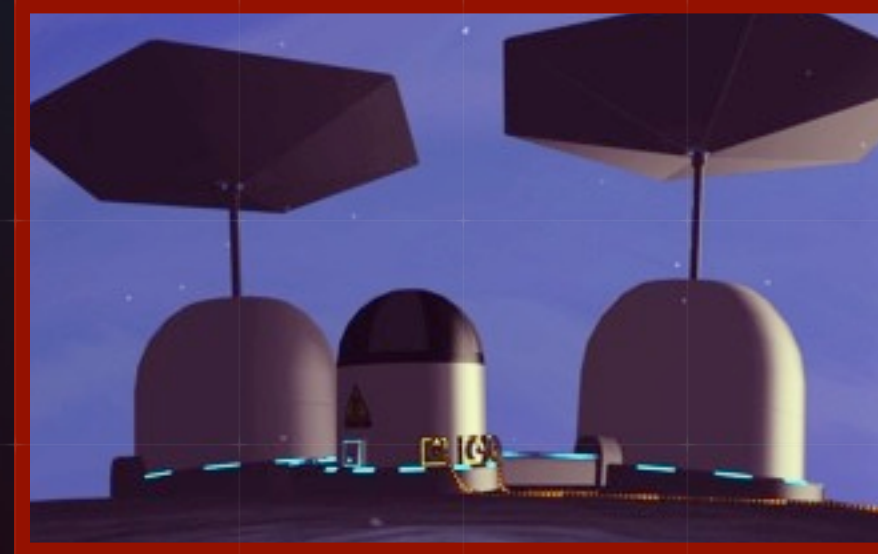
IHI facilities feature the latest state-of-the-art equipment, either self-developed or produced by our sister-company **NexBrain**.



■ Each moon possesses a **BrundleLink 5050** local space teleporter linking it with its neighbours. Goods and personnel can be teleported between moons with a 99.9% transfer safety rating. From any moon, goods may be dispatched to New Earth by teleporting them directly into the receptor of the Warp Gate found on Ackbar.



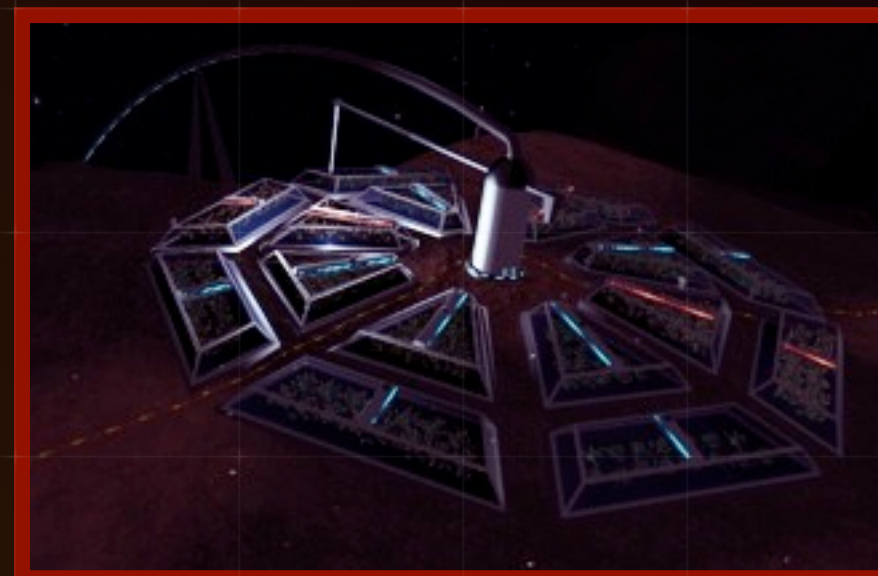
■ **BERT (Build Engineer and Roving Technician)**. This vast droid was responsible for building much of New Hope Station and remains on hand to attend to any major repair or expansion project. It's possible for us to ship facility components via the Warp Gate and have them installed by BERT in short order.



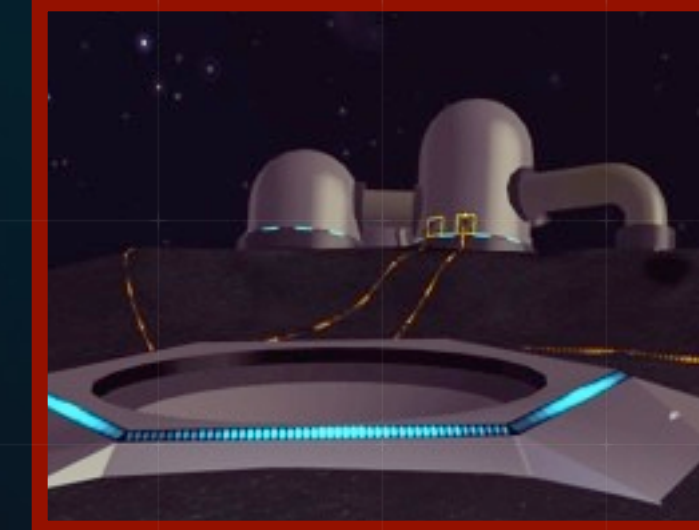
■ **Power Generator**. Our facilities operate entirely via clean solar energy.



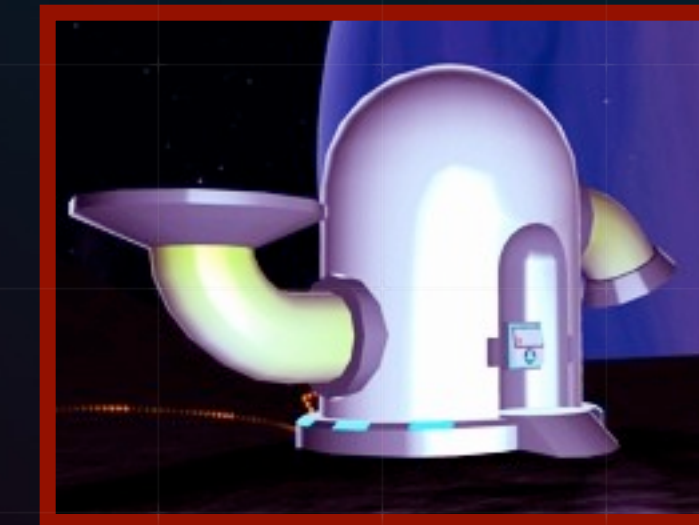
■ **Drone Controller / Drone Homes**. The controller synchronizes drone activity. Each Home acts as garage and service bay for our critical droid work-force.



■ **Greenhouses** on Muffit allow various organics to be grown. Units can be supplied with a range of seed types. Produce may be sold directly or transferred to the Spoony Corp cannery on Mollari for soup production.



■ **Store Depot**. Present on every moon, Store Depots collect, itemize, and shrink-pack all collected resources. They have a direct connection to the teleporter (and warp gate), enabling us to directly ship inventory across the universe.



■ **Janitor Closets** provide a storage centre for all tools and consumable items that Mr Reynolds utilizes in his work. Units generate a localized space rift to permit the same single store of items to be available from any moon.

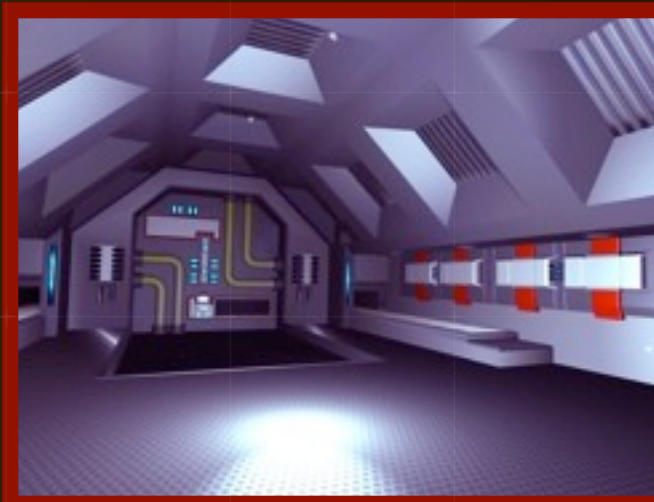


■ **Water Towers** on Mollari and Muffit are crucial to operations on these moons. They must be kept stocked with ice rocks from Kryten.



■ **Waste Processors** on Mollari collect radioactive refinery byproducts.

Periodic purging of these units is a critical part of Mr Reynolds duties.



■ **Refinery / Factory**. Mollari features six 'loading bays' which act as access points to the amazing refinery and factory facilities that were built directly into the moon for maximum security and operating stability. Surface based chimneys and waste emission units remove all by-products; these represent one of the more critical maintenance responsibilities for our operative.

■ The **Moon Operations Manager (a.k.a. MOM)** is responsible for managing all automated components across all seven moons. This state of the art computer system is the most sophisticated Core Management unit NexBrain has ever built and was engineered to meet the strictest safety protocols established following the AI rebellion and ensuing massacre suffered by our Hyperion facility several years back. MOM acts as a guide to Mr Reynolds, alerting him to problems and helping to direct his efforts.

■ **HomePod / Control Room**. Each moon possesses a subterranean bunker housing the local computer core. They also represent a safe haven for our base operative in the case of unexpected solar activity, and in the case of Ackbar he has his own HomePod with fully living and sleeping facilities.

Equipment Issued to Personnel

■ At all times our operative is protected and empowered by an **AstroStar P20** space-suit (featuring an embedded Octavian Technologies **Grabatron 6** unit). The suit's jet-thrusters are independently jointed for unparalleled control and mobility. The Grabatron unit possesses powerful, tentacle like appendages that allow the user to carry heavy items and manipulate machinery while their hands remain free for flight control. Built in LZH DeKompressor tech allows items to be compressed and decompressed on demand to better make use of pack-back storage space.

■ Octavian Technologies are currently working on several upgrades to the Grabatron unit. These include -

- ▶ High velocity spike attachment. Custom made for shattering boulders and other debris
- ▶ Low yield laser attachment. Auto targeting. Ideal for dealing with vermin.
- ▶ Stasis Field projector. Can project a stasis bubble around large, heavy objects allowing them to rolled around with ease.



Mr Reynolds models the
AstroStar P20 by Octavian

Operating Hazards

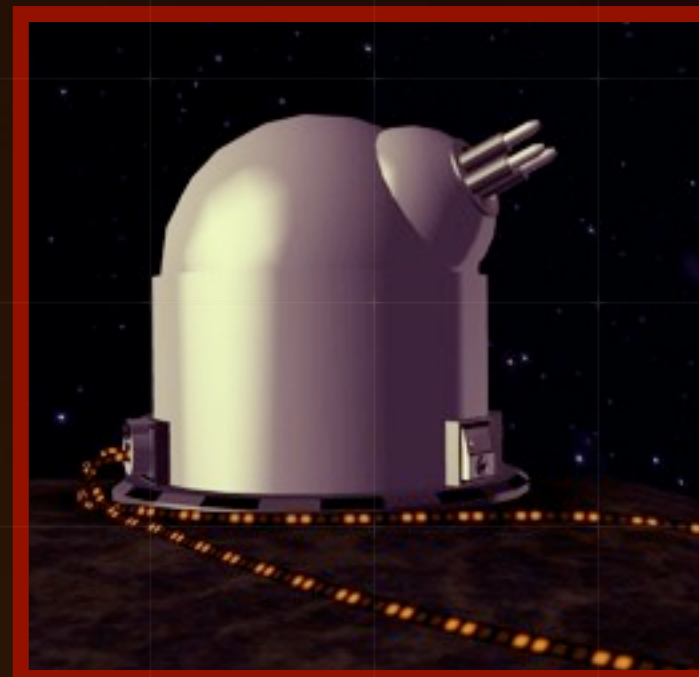
Deep space is dangerous! New Hope Station is engineered to exacting standards that take every conceivable hazard into account.

■ **Solar radiation.** A major threat to working conditions is solar radiation from nearby star Parzeval 7. During a solar storm, any active technology would be hard erased and any unprotected personnel reduced to radioactive slurry. Consequently our bases enforce strict safety protocols; upon the onset of any solar activity, the entire station enters a secure lock-down state and our operative returns to his shielded Home Pod on Ackbar.

■ **Vermin.** Several of the moons are home to resilient insect strains. Whilst generally harmless, these bugs have been known to damage equipment leading to lowered base efficiency if the population is allowed to grow.

■ **Pirate raids.** Several criminal organizations are known to operate large, remotely-piloted ships capable of reaching the Fortes-Q system. We are well aware that the equipment and infrastructure present at our facility commands a high value on the black market and have accordingly installed NexBrain Scumbuster defense pods throughout New Hope Station in order to protect our interests.

■ **'Toaster' activity.** It has been over two years since the infamous manufacturing error which led to installation of military grade AI in one of NexBrain's best-selling kitchen appliances. Our sister company's stock price may have recovered, but regrettably, the Toaster war rages on. We have yet to see any Toaster presence in the Fortes-Q system, but are well aware that our outpost's contribution to New Earth's military will not go unnoticed by Toaster Supreme Commander Bagel-2-Slice.



NexBrain 'Scumbuster' Defense Pod

Frequently Asked Questions

Q. Are the long term effects of isolation and crushing responsibility upon the facility operative's mental health a cause for concern?

A. The health and safety of our operatives is of paramount importance to us, and we strictly adhere to all guidelines issued by NERD concerning interplanetary workers. We provide a generously furnished Home Pod where our operative can relax and enjoy his down-time. Soothing music is piped throughout the Home Pod at all times. As standard issue we provide a **NexBrain Dogbot K9000** automated companion.



Q. What happens if the company operative is involved in a major accident?

A. We are fully prepared for this eventuality.

On a totally unrelated note, IHI would like to express gratitude to our hardworking team of lobbyists; we were very pleased to see NERD relax its heavy-handed policies regarding cloning of deceased workers.

Q. Is there risk that our operative could be coerced into free enterprise initiatives involving company assets?

A. Whilst we - of course - hire only the most trustworthy personnel, it's very clear that the rise of the PUFT movement (People Upholding Free Trade) combined with the recent development of Interspace 'Smuggle Pods' presents a tangible threat. Although we have total faith in Mr Reynolds - and of course he is very aware of the company's severe disciplinary protocols - we have taken the precautionary step of blocking all free communication between Earth and New Hope Station. We are accelerating development of Inspection Drones who will be sent in to conduct facility wide 'spot-checks' upon any hint of wrong-doing.

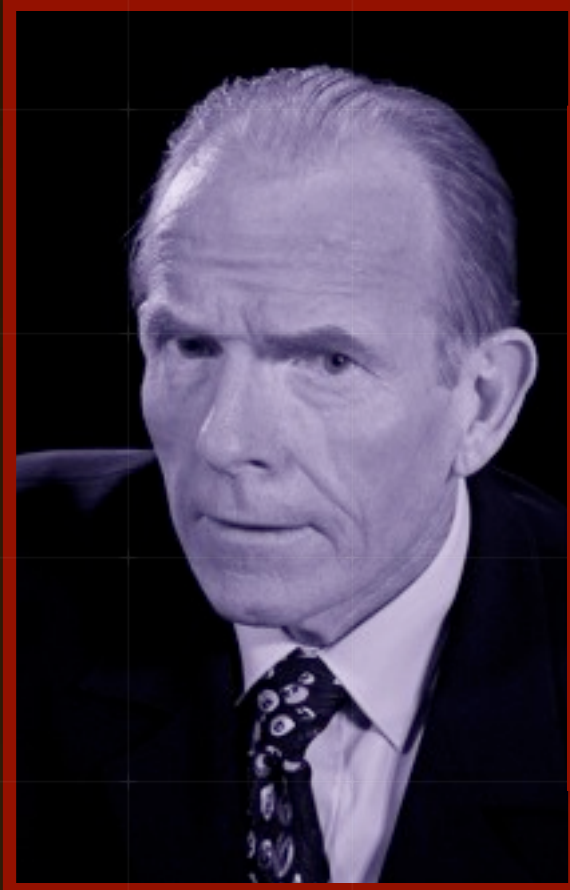
Q. Is the base sufficiently well protected against pirate attack?

A. New Hope Station's defense pods are more than capable of protecting our interests. Short of pirates finding a way to attack us during a solar storm - obviously an impossible scenario - we can count ourselves safe indeed.



Mr Reynolds' Home-Pod on Ackbar

A personal message from IHI's President and CEO, Ajax Snipemann III



"Even as a little boy my head was filled with dreams of travelling deep into space, cracking open worlds with deep-bore mining explosives, and stripping away every last asset to sell to the highest bidder. Seeing those innocent childhood dreams come to fruition in the form of New Hope Station has been a humbling experience indeed.

If, like me, you share a deep love of space and an even deeper love for profit, then I'm sure you won't fail to see the incredible opportunity that IHI's newest venture represents.

Nobody knows deep space like we do. Join us. Let's frack the universe **together.**"

- Ajax Snipemann III

For more information please contact our media representatives - info@spoonsized.com.



Fracking the Universe,
One Planet at a Time